

Child & Youth Belonging in Action:

THE WORK OF THE MEASUREMENT FOR CHANGE TEAM IN WATERLOO REGION, CANADA

Project Partners



Children and Youth Planning Table of Waterloo Region



UNIVERSITY OF WATERLOO

Poster Author:

Serena McDiarmid, PhD Candidate & Vanier Scholar, University of Waterloo & Development & Dissemination Coordinator, Measurement for Change Team
Contact: serena.mcdiarmid@uwaterloo.ca

About the Children & Youth Planning Table

The Children and Youth Planning Table (CYPT) is a community-wide partnership that includes over 800 service providers, researchers, planning bodies, and funders serving children, youth, and families in Waterloo Region.

The CYPT Mission

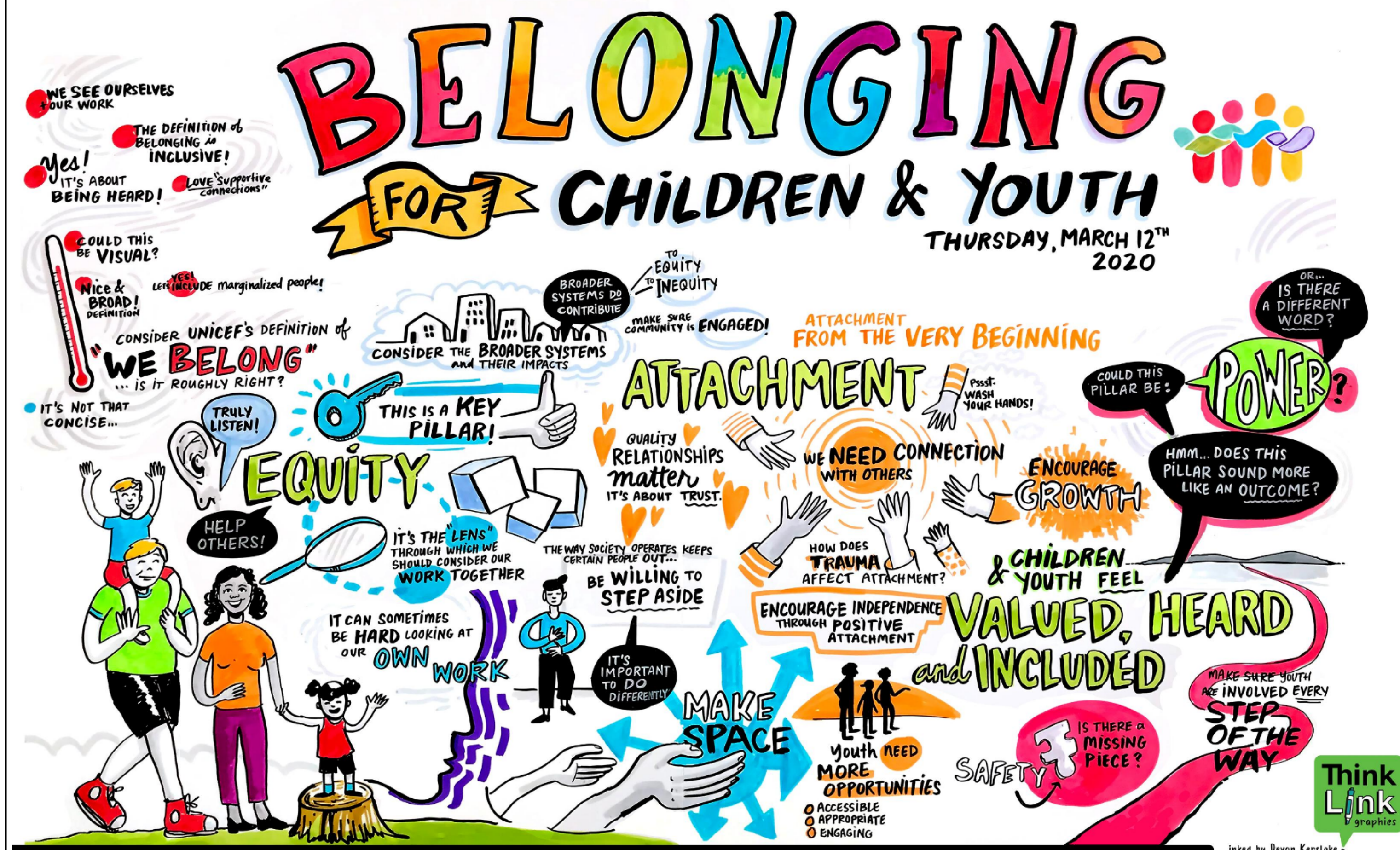
To collectively mobilize as one system for children and youth in Waterloo Region that relentlessly strives to maximize wellbeing throughout generations.

Our Focus on Belonging

We believe a strong sense of belonging is foundational to child and youth well-being. When young people's sense of belonging increases, it leads to many other good outcomes.

The Measurement for Change Working Group

We work to promote shared measurement tools and to support standardized data collection and evaluation practices. We are currently focused on measuring belonging.



Our community's conceptualization of belonging, captured in 2020.

Measuring Community-Level Belonging with the "Where I Belong" Survey

We developed and validated a survey measuring youths' sense of belonging to their community (i.e., contexts encountered in day-to-day life).

Questions ask about belonging across contexts, interpersonal indicators of belonging, and experiences of equity. All items are positively worded.

Key Indicators



86% of respondents reported feeling a strong sense of belonging to their local community.

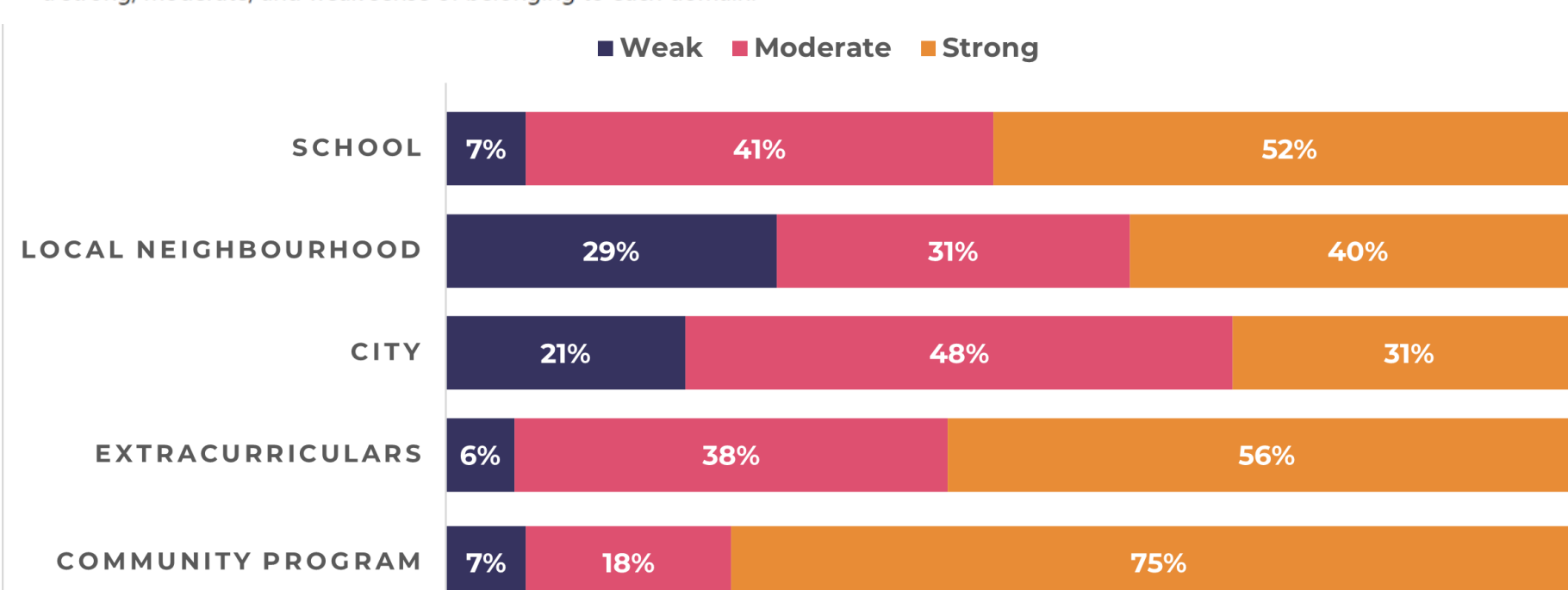


22% of respondents reported experiencing discrimination or unfair treatment in the community because of who they are.

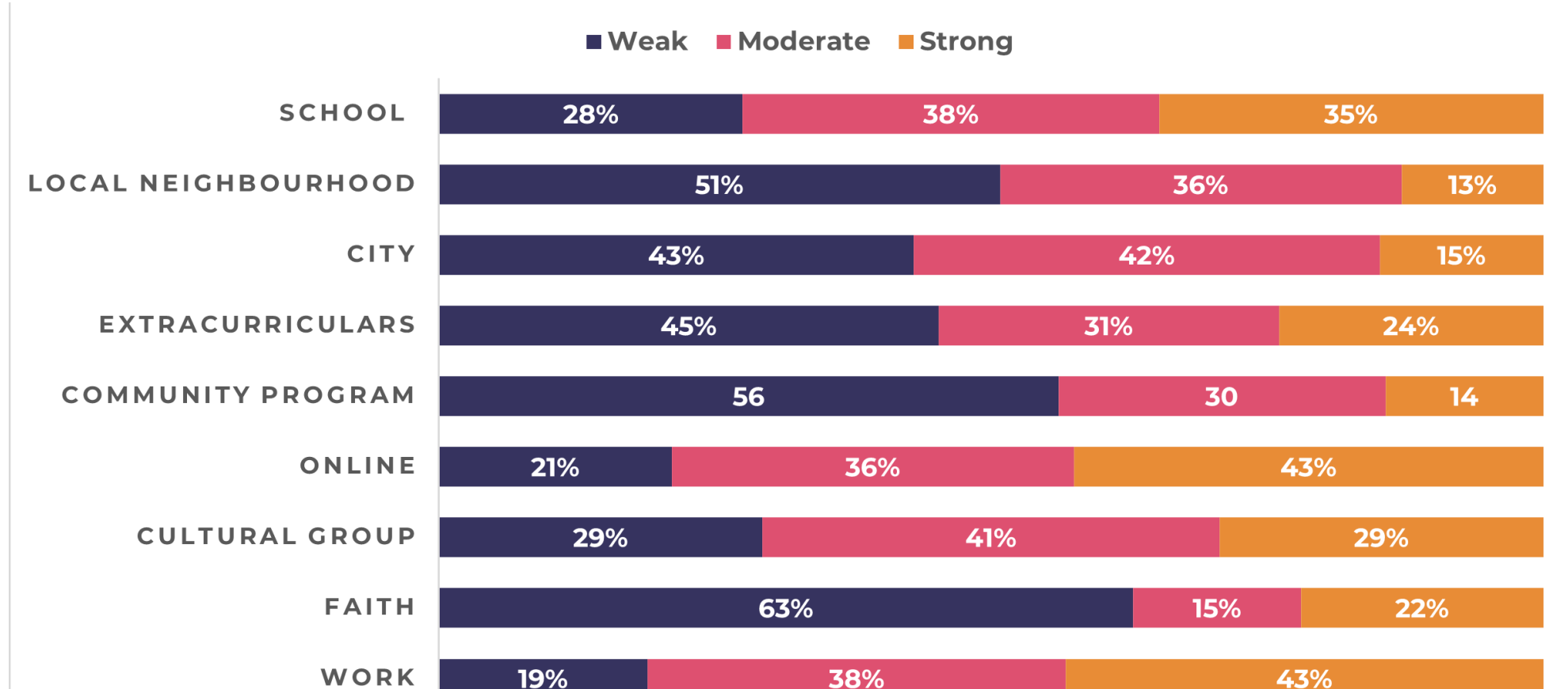
Local Respondents, Recruited From Community Programs (n = 405)

Belonging Across Community Domains

This chart compares sense of belonging across specific domains of community life. We used a 7-point Venn diagram to ask respondents about their belonging to these domains. The chart shows the percentage of respondents who indicated a strong, moderate, and weak sense of belonging to each domain.



Local Youth Respondents, Recruited From Local Community Programs (n = 95)



Young Adult Respondents in Canada, Recruited Online (n = 250)

Belonging Across Contexts

THE MEASUREMENT FOR CHANGE PROJECT

PRESENTED BY:
THE UNIVERSITY OF WATERLOO &
THE CHILDREN AND YOUTH PLANNING
TABLE OF WATERLOO REGION



Watch our one-minute explainer video [here](#) or by following the QR code.

Measuring Program-Level Belonging

We work with community organizations to support evaluation capacity and promote the use of shared belonging measurement tools so the way belonging data is collected and measured across our community is consistent.

Check out our one-minute video to learn more about how we work with community partners and our impact!

Research Funders



Bourses d'études supérieures du Canada
Vanier
Canada Graduate Scholarships



Social Sciences and Humanities Research Council of Canada

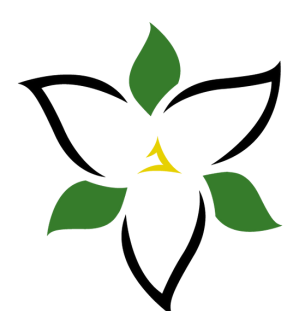
Mitacs Accelerate

Conseil de recherches en sciences humaines du Canada

Canada

Program Funder

Ontario Trillium Foundation



Fondation Trillium de l'Ontario

An agency of the Government of Ontario
Un organisme du gouvernement de l'Ontario